



Children's
Specialized
Hospital Foundation®

Improving lives. Changing futures.

2020

ANNUAL REPORT

OVERCOMING
DISRUPTION
TO ACHIEVE
OUR BEST
FUNDRAISING
YEAR EVER!

Finding Success in a
Transformative Year

2020 BOARD OF TRUSTEES

AS OF SEPTEMBER 2020

Officers

Leslie Logan Taylor, Chair

Michael Harrison, Esq., Vice Chair

Stella Matteace-Esposito, Treasurer

Michelle Hall-Duncan Secretary

Trustees

Bill Arnold

Celeste Androit Wood

Vincent Baricaua

John R. Blasi, Esq.

Nicholas A. Boccella

John P. Boyle III

George Destafney

Mairead Goetz

Paul Krieger

Michael Lewis, Ph.D.

Justin Mayer

Edward J. McKenna Jr., Esq.

Michael V. Miller

Mark Montenero

Warren Moore, FACHE
CSH President & CEO

John Nietzel

Donald Pearl

Bonnie Rodriguez

Philip Salerno III
CSH Foundation President & CDO

Anita Siegel, Esq.

Matthew Skurbe

Daniel Spicehandler

Fred Tewell

Victor Viscomi

Neil Wolitzer

Emeritus Board Members

Paul C. Bosland, Chairman Emeritus

Alexander R. Giaquinto, Ph.D., Chariman Emeritus

Louis Parent, Emeritus Trustee

Honorary Trustees

Joseph Lamendola, Ph.D.

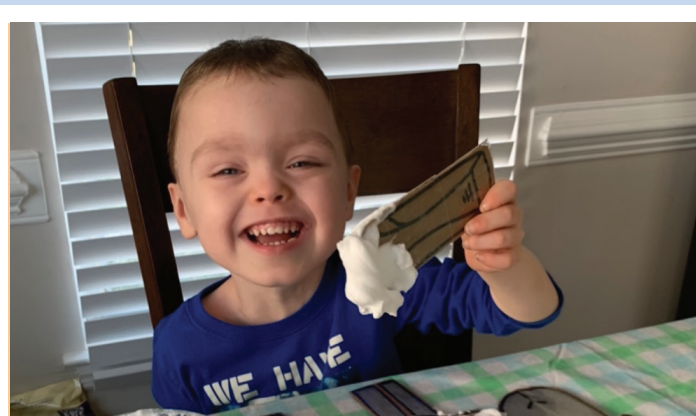
Frank Vuono, 16W Marketing, LLC

Legal Counsel

Barbara Frantz, Esq.

Thomas C. Phelan, Esq.

Phelan, Frantz, Ohlig & Wegbreit LLC



CONTENTS

- 1 Reflections from Leadership
- 2 Investing 100% in Children's Futures
- 3 Year in Review
- 4 Financials & Impact
- 6 Compassion Makes Miracles: Aiden Tedesco's Story
- 7 2020 Supporter Honor Roll

Reflections on a Truly Transformative Year

Dear Friends,

What can I say about last year that hasn't already been said? Unprecedented? An unforeseen pandemic of a lifetime? Or what about the new vocabulary we have all developed? Zoom is now a noun instead of a verb. GoToMeeting is a complete sentence. You're on mute. Log off and try again. I can't hear you, can you hear me?

Throughout 2020, the one saying that kept rising to top of mind was, "It's not what happens to you but how you react to it that matters." In fact, the only thing we could control was our response to the uncertainty that surrounded us.

I can tell you with great pride that our response to the disruptive events of 2020 powerfully demonstrated that our commitment to children has never been more clear or certain.

For us on the Foundation staff, it only took a few days to realize that in spite of our concerns, patients and families would continue to turn to us with hope in their hearts that their child would receive the care they need. Their care is always our first priority—and it couldn't wait.

We adapted quickly launching an emergency COVID-19 fund to support the expansion of telehealth and converting our Walk n' Roll and Radiothon to virtual events. And we did all of that and more after rapidly switching to a fully remote work environment.

We helped secure PPE, hand sanitizer and meals for staff. The outpouring of support from our donors, local restaurants and community groups—all navigating their own unique challenges caused by the pandemic—was overwhelming and truly humbling.

financial year ever. We moved forward with the restructuring of our Foundation staff. We gained approval for a new self-funding strategy that enables you, our supporters, to make a greater impact for the children who so desperately need our care by providing a method by which 100% of every donation we receive directly benefits the hospital.

These highlights and more are featured in this report.

We could not have achieved such great success without the commitment to the children that we all share.

Thank you!



“

Our response to the disruptive events of 2020 powerfully demonstrated that our commitment to children has never been more clear or more certain.

”

— PHILIP SALERNO III —
Foundation President & Chief Development Officer



FINDING SUCCESS IN A TIME OF EXTRAORDINARY DISRUPTION

2020 was a year like no other. As a society, our strength and resourcefulness was challenged at every turn. Like every business, the Foundation faced unforeseen challenges that forced us to think differently and re-imagine the way we work.

There were many initiatives already underway and plans for a fantastic year were in place when our outpatient facilities—and the rest of the world—shut down in March. The hospital moved quickly to implement telehealth services so our patients' care would not be interrupted. The Foundation answered the need immediately with a COVID-19 Emergency Response Fund to support telehealth expansion and other unforeseen expenses that the hospital may incur.

Despite the disruptions and uncertainty, the Foundation stayed true to its mission and had the best fundraising year in its history.

Now working at home full time, our staff remained focused and motivated—from raising funds for telehealth costs, purchasing additional personal protective equipment (PPE) and supplying meals for staff to reinventing our planned fundraisers. We moved forward with a restructuring plan that was already in place, reorganizing departments and workflows, moving employees into positions where they would make the greatest impact and onboarding new employees remotely.

We didn't let the pandemic stop our dedication to supporting the kids at CSH. Instead of canceling our 4th Annual Open, we postponed it for a few weeks and worked with the golf course to develop a new, safe way to gather. We implemented a tee time format and a digital program to keep the golfers connected to the purpose of the day. A few weeks later, we developed and launched our first Restaurant Week to support the businesses in our community by encouraging customers to dine at (or pick up takeout from) local restaurants. We held celebrity virtual visits for the patients in New Brunswick and created a virtual holiday concert that they could enjoy through the hospital's Get Well Network.

Stay-at-home and social distancing recommendations made an in-person Walk n' Roll impossible, so we pivoted to a virtual format. We launched a virtual activity challenge and our supporters didn't let us down. We developed new Team Captain Toolkits containing fun Walk n' Roll items and mailed them to participants to keep the spirit of the event alive. On event day, we presented a livestream variety show on Facebook and YouTube that featured local performers who generously volunteered their time to us.

An unprecedented year brought out the best in our team. We learned a lot about ourselves, our business, and our flexibility. In addition to the success we had in 2020, we also discovered a renewed energy and burst of innovation that carried us through the pandemic and is sure to inspire great success in the future.



The COVID-19 Emergency Fund was launched by the Foundation.

This fund raised over \$900,000 to support the hospital's greatest needs during the pandemic, including the implementation of telehealth, additional personal protective equipment (PPE), and meals for staff.



CSH opened its 14th NJ facility in Somerset.

This new facility offers two new programs, the Pediatric Feeding Disorders Program and CSH RUCARES Severe Behavior Program. Pictured here are CSH RUCARES Severe Behavior Program Pre-Doctoral Intern, Sean Smith, and Registered Behavior Technicians, Halle Norris and Shannon Angley.



Children's Specialized Hospital named Long Term Care Facility of the Year by NJBIZ, New Jersey's Leading Business Journal.

2020: YEAR IN REVIEW



“Although 2020 challenged us like never before, I also feel that it brought our CSH community closer together. The appreciation and kindness shown to us by generous donors was truly overwhelming. Your donations enabled a smooth transition from in-person to telehealth services for our patients, ensured our team members were never without a warm meal, and lifted our spirits with kind words shared during the earliest and darkest days of the COVID-19 pandemic. The strength, resiliency and flexibility of our CSH team members was also never more apparent. Our team went above and beyond to ensure the safety and well-being of our patients, families and one another during a very uncertain time. And even though they were facing incredible demands both at work and at home, they continued to provide the personalized, quality care needed for every child to reach their full potential.”

—Warren E. Moore, FACHE, President & CEO, Children’s Specialized Hospital and Senior Vice President, Children’s Services, RWJBarnabas Health



The Foundation’s 4th Annual Open was a success with over 140 golfers in attendance. After a date and format change due to the onset of the COVID-19 pandemic, our team moved forward with the 4th Annual Open and raised over \$100,000 for CSH.

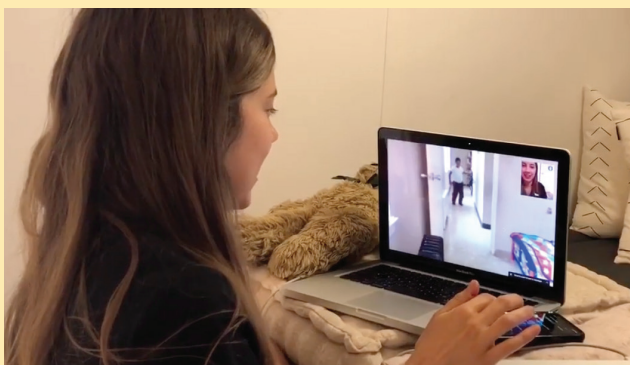


TUNE IN ON SEPTEMBER 13, 2020 FOR A LIVE STREAM CELEBRATION
HOSTED BY YOUR FAVORITE PERSONALITIES FROM MAGIC 98.3 & 1450 WCTC AND FEATURING...



The 14th Walk n’ Roll was virtual!

With safety as the first priority, the Foundation decided to host a virtual Walk n’ Roll. The summer-long activity challenge culminated with a 3-hour livestream event featuring acts by ten talented local performers hosted by Magic 98.3 and WCTC radio personalities. Our community of supporters rallied around our efforts and we raised over \$145,000!



CSH outpatient facilities closed for two weeks in March and the transition to Telehealth began. After a two week mandatory closure, our outpatient facilities reopened with new safety measures in place. Telehealth services were rapidly launched and by summer, 75% of our patients were continuing their care using the new service. CSH therapists rose to the occasion, designing creative ways for patients to have impactful therapy sessions at home.



BETTER TOGETHER
Inaugural Restaurant Week was launched by the Foundation. Amid the disruption of our usual activities, our innovation team developed the Better Together initiative that included our first ever restaurant week.



Give Hope Radiothon
We took over the airwaves on 98.3 FM and WCTC AM to raise funds for CSH! We quickly adapted new technologies to make the Radiothon a success including text to give and a virtual phone bank.

INVESTING 100% IN CHILDREN'S FUTURES

As of January 1, 2020, 100% of every donation to Children's Specialized Hospital Foundation directly supports the hospital's vital programs and services that are transforming the lives of children with special healthcare needs.

Over the last three decades, the Foundation's stewardship of your philanthropic support has enabled us to provide funding for Children's Specialized Hospital (CSH) to add new programs, initiate new research projects, and build or open new facilities throughout New Jersey. With our help, the CSH network of care for children has grown to include the PSE&G Children's Specialized Hospital inpatient hospital in New Brunswick and 13 outpatient centers spanning the state from Clifton to Egg Harbor.

The funds we raised together helped to elevate CSH to the nation's leading provider of pediatric rehabilitation. Our careful planning and successful fundraising efforts have contributed to the hospital becoming the largest regional provider of services for children living with autism spectrum disorder. Perhaps most importantly, by supporting the growth of CSH, together we have helped to increase access to life-changing care for tens of thousands of children living with special healthcare needs in New Jersey and beyond.

We pride ourselves on being exceptional stewards of every responsibility entrusted to us including donations, relationships, the success of hospital programs and services, and ensuring that children with special healthcare needs have access to care. It is this dedication to stewardship and a forward-thinking leadership style that led Philip Salerno III, CSH Foundation President and Chief Development Officer, to review the Foundation's structure, assets, and initiatives in an effort to maximize the impact of our past, present and future philanthropic efforts.

After many months of work with our strategic planning partners, Nonprofit Velocity, a new financial strategy was developed and launched in 2020 that takes our commitment to the next level and secures the future of the Foundation.

Disciplined management the Foundation's investments over the last decade now allows us to sustainably cover all of the Foundation's operating expenses. In essence, the generosity of our key donors in the past has secured the future of the Foundation and the further growth and development of CSH by providing support for hospital programs and services and establishing a strong financial base that now allows us to give 100% of every dollar we raise to the hospital.

We are proud of the impact this new financial strategy will have on the children in our community living with special healthcare needs. Our donors can take pride in knowing that every penny of their donation is working to improve kids' futures by increasing access to specialized pediatric healthcare and enhancing the medical programs and services at CSH that are transforming children's lives every day.



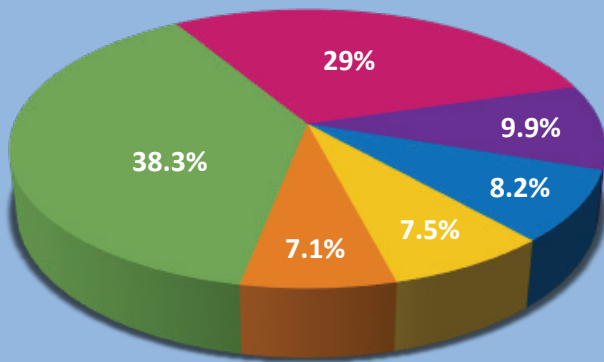
FINANCIALS

STATEMENT OF REVENUE AND EXPENSES
YEAR ENDING DECEMBER 31, 2020
(IN THOUSANDS OF DOLLARS)

The Foundation raised over \$18.3M in 2020—making it our best fundraising year in our history.

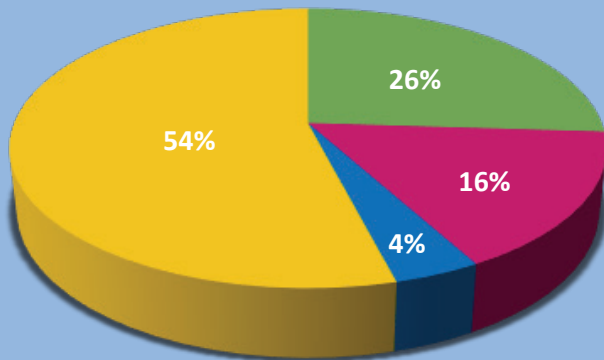
The 100% model began on January 1, 2020 and therefore no fundraising revenue was applied to our 2020 operating expenses.

FOUNDATION REVENUE



■ Capital Projects & Equipment	7,018
■ Planned Giving & Bequests	5,307
■ Children's Miracle Network	1,812
■ Annual Giving & Events	1,501
■ Investment Income	1,367
■ Grants	1,312

GIFT DESIGNATION



■ Capital Projects & Equipment
■ Hospital Programs
■ Research & Innovation
■ Charity Care

YOUR GIFT'S

IMPACT

AT-A-GLANCE

35,000

CHILDREN
TREATED



AT OUR

14

NEW JERSEY
FACILITIES



MORE THAN

50

ACTIVE
RESEARCH
STUDIES



\$814,000

GIVEN IN CHARITY CARE

TRANSPORTATION
ASSISTANCE FOR

393
FAMILIES



40+

PROGRAMS &
SERVICES
SUPPORTED

OVER

600



EARLY DEVELOPMENTAL
& AUTISM SCREENINGS



19,000

TELEHEALTH VISITS

Compassion Makes MIRACLES

From a young age, Aiden faced a number of obstacles including delayed development, a bowel obstruction, and laryngomalacia, a congenital softening and malformation of the larynx that can partially block the airway. He needed a number of reconstructive surgeries, required a G-tube for feeding, and had a portion of his intestine removed.

Right after his second birthday, Aiden was adopted by the Tedesco family. Unable to walk or talk, he began early intervention services along with outpatient occupational therapy and feeding therapy at Children's Specialized Hospital (CSH) in Hamilton, NJ.

Aiden began working with occupational therapist, Vanessa Rey, who worked specifically on refining his fine motor skills, expanding play schemes, adapting food textures at hand level, and improving his tolerance for transitions between activities. Coinciding with his occupational therapy, Aiden worked with speech pathologist, Heather Capriotti, on his food aversions.

Kerry Tedesco, Aiden's mom, says that when Aiden started with feeding therapy, she learned so much from both Vanessa and Heather about the different tools that could help him at feeding time. "Aiden has a lot of food difficulties alongside a number of allergies, which leads to some behavior issues. When he started feeding therapy, he couldn't even hold a spoon and I really didn't know if he would ever be off his feeding pump." She continues happily, "Feeding therapy has been pretty amazing. He's been off the feeding pump since he was about three-and-a-half and we only use his G-Tube once a day for a small amount of supplemental water."

BENEFITING FROM TELEHEALTH AT THE HEIGHT OF THE PANDEMIC

Our patients rely on their therapy to maintain their levels of progress. When the COVID-19 pandemic struck, CSH was faced with the unique challenge of protecting the health of our medically fragile patients while finding a way to continue their vital care so their progress was not disrupted.

At the onset of the pandemic, Aiden went from seeing his therapist in person to utilizing telehealth services. "Vanessa and Heather have been the biggest help in this journey," shares Kerry. "He gets so excited to see his therapists whether on screen or in person. He looks forward to talking and interacting with them."

"Aiden was my last patient of the day and I couldn't be any happier to see him," says Vanessa. "Every week



when the video started he would greet me with, 'Hi, Miss Vanessa. How are you?', and he would continue to tell me what was on his shirt." She continues, "Aiden made great gains through telehealth and it was bittersweet ending this episode of care."

Kerry learned to implement skills she learned in therapy at home between sessions. "Something Vanessa has worked with Aiden on during his occupational therapy sessions is how to properly put on his socks. One day as I was putting his socks on I said to him, 'Remember, Miss Vanessa says thumbs first!' Now, every time we put his socks on he will say, 'thumbs first!'"

LOOKING FORWARD

Now, almost six-years-old, Aiden continues with occupational, speech and feeding therapies. Currently, Kerry and his care team are working on developing a therapy plan through CSH's autism program. "Aiden was recently diagnosed with autism. I had suspected he was autistic for years based on a number of factors," shared Kerry. "Finally, thanks to CSH, we were able to have a series of evaluations and appointments to figure that out and get a plan together."

Kerry reflected, "When Aiden came to us, all of his doctors had basically written him off. But after a few months with the right support we began to see a difference."

She continues, "This kid has had so many obstacles thrown at him and he is just amazing. We owe so much to Children's Specialized Hospital."

2020 SUPPORTERS

The work we do would not be possible without the generous and unwavering support of our donors. Because of you, we not only survived an incredibly challenging year, we made an unprecedented impact.

Your generosity granted access to specialized care for more than 35,000 children in 2020. With the most sincere gratitude, we thank you.

Transformative (\$1,000,000+)

Anonymous
Estate of Alfred A. Moser
Jay and Linda Grunin Foundation**

Visionary (\$500,000+)

Vincent Baricausa**
Costco Wholesale Corp.*

Benefactor (\$250,000+)

Anonymous
Estate of Evemarie C. Gilfillan
Extra Life*
Kohl's Department Stores, Inc.
Louise Washington Charitable Remainder Unitrust
Harold B. & Dorothy A. Snyder Foundation
The PSE&G Golf Outing to benefit Children's Specialized Hospital
Walmart, Inc.*

Leadership (\$100,000+)

Anonymous
Johnson & Johnson Family of Companies
Virginia Ohmeis Unitrust
PSEG Foundation
RE/MAX*

Humanitarian (\$50,000+)

Anonymous
Mr. and Mrs. Nicholas A. Boccella
Ms. Sandria DeSapio
Marjorie W. Hegarty Charitable Remainder Unitrust
Dr. Heinz K. Hofmeister
IHOP Restaurants*
Liam's Room
Mr. Edward J. McKenna, Jr.
Mr. and Mrs. Michael V. Miller
Mr. Mark Montenero/Autoland
Panda Restaurant Group, Inc.*
Riteaid*
Mr. and Mrs. Matthew Skurbe
Speedway*
Ms. Leslie Taylor*
The Allergan Foundation
The Healthcare Foundation of New Jersey
The Willits Foundation
Timothy J. Piazza Memorial Foundation**

Mr. and Mrs. Fred Tewell**
Wawa, Inc.*

Founder (\$25,000+)

Ace Hardware*
American Pile and Foundation LLC
Angelo Fiorito Trust
Anonymous
Estate of Elaine Berson
Mr. and Mrs. Alan J. Blake
Blanche M. and George L. Watts
Mountainside Community Foundation
Burns & McDonnell Engineering Co.
Mrs. Leona L. Deliberato
Eii, Inc.
Ferreira Trucking Company, Inc.
Furino & Sons, Inc.
Henkels & McCoy, Inc.
The Hyde and Watson Foundation
J. Fletcher Creamer & Son, Inc.
Jingoli Power, LLC
Joseph Jingoli & Sons, Inc.
Joy in Childhood Foundation
Mr. and Mrs. Paul S. Krieger
The Margaret and Peter Chang Foundation
Estate of Sharon O'Malley
PSE&G Corporation
Ms. Anita J. Siegel, Esq.
Estate of Roderick Springer
StevensTHON at Stevens Institute of Technology*
Ms. Katherine F. Van Allen
Wakefern Food Corporation

Cornerstone (\$10,000+)

Anonymous
Mr. William Arnold
Brave Beginnings
C. Northrop and A. Marder Pond Foundation
Church & Dwight Co.
Mr. Gregory Cote
Mr. and Mrs. Thomas E. Cross
Deloitte Services, LP
Mr. and Mrs. George Destafney**
E.J. Grassmann Trust
East Coast Toyota
Elecnor Hawkeye LLC
Mrs. Audrey Farley
Mr. and Mrs. Jeffrey Fischer

Give Hope Radiothon with Magic 98.3 and WCTC*
Goldman Sachs Gives
Mairead and Paul Goetz**
Mr. and Mrs. Barry M. Gross
Ms. Michelle Hall-Duncan**
Haugland Energy Group LLC
Henry Niles Foundation
Hess Corporation
Highlanderthon at New Jersey Institute of Technology
Investors Bank
Investors Foundation
John Jr. and Michael Rohall Jr. Foundation
Karma Foundation
Kean Dance Marathon at Kean University*
The Kessler Foundation
Estate of Adelaide C. Kroeger
Matrix NAC
McPhee Electric
Estate of William F. Mirra
OceanFirst Foundation*
Mr. Nicholas J. Paola
Mr. Douglas D. Perley and Mrs. Eileen M. Campbell
Estate of Howard F. Prass
PSEG Power of Giving Campaign
Michael Riesz & Co., Inc.
Mr. Philip Salerno III
Sargent & Lundy, LLC
Pinky & Neel Shah
Standish Foundation
The Carian Group Corporation
The Connell Company
The Eleanor Upton Charitable Foundation
The Jessica Foundation
Union Foundation
Mr. and Mrs. Victor Viscomi**
Mr. and Mrs. Frank E. Walsh, Jr.
Young Management & Consulting

Builder (\$5,000+)

Mr. and Mrs. Jacques P. Andre
Anonymous
Asplundh Tree Expert LLC
Bay Crane Service of New Jersey
Mr. Howard Berkowitz/Aquaradise
Bruce and Melissa Fischer Family Foundation Trust
Bunting Family Fund

THANK YOU to our 2020 SUPPORTERS

Car Wash Operators of New Jersey, Inc.
Carl's Fencing, Inc.
CDW Corporation*
Central Jersey Family Health Consortium
Mr. Adam Cowburn
Dairy Queen*
Dr. and Mrs. John A. DeFord
Diantha P. Holman Charitable Foundation
Direct Energy*
Mr. and Mrs. Arthur Esposito**
Dr. and Mrs. Alexander R. Giaquinto
Goldman Copeland Associates, P.C.
Hammond Contracting Co., Inc.
Harlan Electric Company, Inc.
J. Supor & Son Trucking & Rigging Co., Inc
Janssen Pharmaceutical, Inc.
Kids Helping Kids, Inc.
Mr. Justin Mayer and Dr. Tina Mayer**
Lindabury, McCormick, Estabrook & Cooper
Mickey's Kids Foundation
Monmouth Medical Center RWJBarnabas Health
Montana Construction Inc.
Montclair State Dance Marathon at Montclair State University*
Ms. Nancy D. Morris
New Jersey Manufacturers Insurance Co.
Nordic Contracting Co., Inc.
Mr. and Mrs. Gerald M. Ostrov
PNC Bank, N.A./PNC Foundation
PNC Financial Services Group
Relay & Power Systems
Ms. Alexandria Price
Roman E&G Corp.
Elias Sayour Foundation, Inc.
Schneider Electric
Mr. and Mrs. Jeffries Shein
Siemens Energy, Inc.
Sterling
Alan and Corinne Swoff Charitable Foundation
The Blackstone Charitable Foundation
The Mazars USA Philanthropic Fund
The Patchett Foundation, Inc.
USI-Power Co.
Vericon Construction Company
Willdan Energy Solutions

Pillar (\$1,000+)

Mr. and Mrs. James Abbott
Aergo Solutions LLC
Amazon Smile Program
American Aluminum Company
Andrew Gomez Dream Foundation*

Mr. and Mrs. Charles F. Armbrust
Ashford Properties, LLC
Autodesk Foundation
Mr. Paul and Dr. Bonnie Altieri
Ruth and Alan Bash
Mr. Melvin Batista*
Becton, Dickinson and Company
Bederson LLP
Mr. Nilay Bhatt
Black & Veatch
Mr. and Mrs. Peter E. Black
Mr. and Mrs. John R. Blasi, Esq.
Mr. and Mrs. Robert M. Blochlinger
Boardsource
Mr. Paul C. Bosland
Mr. and Mrs. Lawrence G. Botts, Jr.
Mr. and Mrs. Nicholas Bradshaw
Mr. Brent Bramnick
Breaker Electric, Inc.
Broadridge Financial Solutions, Inc.
Mr. Gary Budlow
Campbell Family Foundation, Inc.
Mr. Edward Canseco
Mr. and Mrs. Robert Carnevale*
Ms. Eileen Chalmin*
Mr. and Mrs. Antony Chen
Ms. Lili Chen*
Child's Play
CIFIC Asset Management, LLC
CMC Energy Services, Inc.
Coca-Cola North America*
Mr. William D. Colon
Mr. Grant Conaghan*
Mr. Kevin Cope
Ms. Noel Cotter*
Cranford Theater JDS Entertainment LLC*
CustomInk LLC
Ms. Traci DeAngelis
Mr. and Mrs. Edward Decker*
Mr. Michael DeGennaro*
Dr. and Mrs. Ankur Desai
DNV Energy Services USA Inc.
Beth Anne Myarick Dobosh and Brian Dobosh
Mr. and Mrs. Joseph J. Dobosh, Jr.
Mr. and Mrs. Robert E. Donahue
Mr. and Mrs. John Duetsch
Ms. Margaret C. Dugdale
Mr. and Mrs. Michael Duhaime
Mr. Hassan El Geziry
Election Fund of Joseph V. Egan
Mr. and Mrs. Corneluis Elsasser
Empire Lumber & Millwork Co.
Mrs. Dorothy K. Engel
Mr. William Engel
Ms. Patricia M. Engelman

Estate of Doris Keller
Estate of Joseph Ciurczak
Facebook
Fanwood-Scotch Plains Service League Inc.
Ms. Jennifer Farrell
Farro's Far Out Tees Inc.
Mr. John D. Ferko
Ms. Ruth Fiore*
Dorothy D. & John C. Fitterer Foundation, Inc.
Ms. Patricia Foley
Folgio and Associates, LP
Fromkin Brothers, Inc.
Garden State Chapter of ASHI, Inc.
Mrs. Margaret Genitempo
Mr. and Mrs. Gregory Georgieff
Ghiorso & Sorrenti, Inc.
Mr. Christiano Gomes*
Mr. Artemio Gonzalez*
Gotham Communications
Got-Stuffnet, LLC
Mr. and Mrs. Allan Greenstein
Mr. Maurice Griffiths*
Miss Catherine Gural*
Gusmer Enterprises, Inc.
H. A. Fernot Co., Inc.
H2M Architects + Engineers
Mr. and Mrs. David M. Hackett
Ms. Wendy S. Halliwell
Hamilton's Tavern
Hammell Weber Donor Advised Fund
Harold and Barbara Martin Foundation
Mr. Michael S. Harrison and Ms. Amanda Croft
Hart-Hamp, Inc.
Mr. and Mrs. Roy Henricksen
Ms. Elena Herskowitz
Highland Associates
Ms. Carol Hordichuk
Horizon Pest Control*
Mr. Louis Iacoponi
Int'l Brotherhood of Electrical Workers Local Union No. 456
Izzy's Infantry*
J. G. Schmidt Steel
J. S. HELD LLC
Mr. Brian James
Mr. and Mrs. Dean Janeway, Jr.
Jarmel Kizel Architects & Engineers
JMB Foods*
John W. Bristol & Co., Inc.
Ms. Nancy R. Johnson
J.P. Stevens High School*
Mr. Steve Kalafer*
Mr. and Mrs. Dean Kameros

Kemsco Construction & Equipment Co. Inc.
 Mr. Jonathan Kim*
 Ms. Melinda King*
 Mr. and Mrs. Stuart M. Kipilman
 Mr. and Mrs. John J. Kirchner
 Kiwanis Club of Jackson
 Mr. and Mrs. John W. Knight
 Mr. Paul Kolterjahn
 Mr. and Mrs. Lawrence J. Kramer
 Mr. and Mrs. Stanley Kurzweil
 Mr. and Mrs. Sam Landy
 Langan Engineering and Environmental Services
 Mr. Wayne Lawall
 Lawrence Lodge #62
 Mr. Morris Levy
 Mr. Jonathan Lockhart
 Lone Wolf Technologies*
 Mr. Stephen Lowe
 Mr. and Mrs. Roy Lundgren
 Mr. and Mrs. John K. Macaniff
 Macedonia Housing & Development Corp.
 Mr. James D. Mahan
 Mr. Charles Mapes, Jr.
 Sara and Charles Mapes, IV
 Ms. Amy B. Mansue
 The Marks Foundation
 Marriott International*
 Ms. Mariana Martins
 Mr. Joseph A. Bilotta and
 Ms. Mary M. McArdle
 Drs. Stacy and Matthew McDonald
 McKinsey & Company, Inc.
 Mr. Eric W. Meder
 Mildred Burg Private Foundation Inc.
 Miller & Chitty Company, Inc.
 Mr. and Mrs. Joseph Mindak
 Mr. Michael Misciagna*
 Mr. and Mrs. John. G. Modzelewski
 Jen and Warren Moore
 Morgan Stanley
 Mr. and Mrs. Frank A. Mortillo
 Mr. and Mrs. G. Dewey Moser
 Network for Good
 Mr. and Mrs. Donald C. Neu
 Mr. and Mrs. William E. Newell, Jr.
 Mr. and Mrs. John F. Nietzel
 Mr. Sergio Nobre
 Northern Elite Gymnastics & Cheer*
 Ocean Video Productions
 Mr. and Mrs. Kenneth O'Hanlon
 Drs. Sara and Colin O'Reilly
 Mr. William Ortiz
 Ms. Jean Pascuiti
 Paulus, Sokolowski and Sartor, LLC

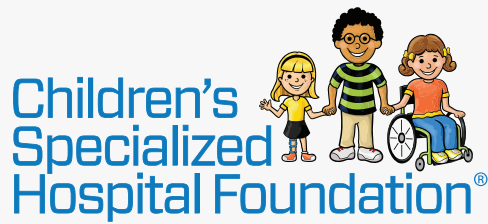
Ms. Kathryn Pearsall
 Ms. Barbara Peek
 Mr. and Mrs. Donald Pearl
 Mr. Michael Peragine
 Mr. and Mrs. Geoffrey Perselay
 Mr. Daniel Perun*
 Mr. and Mrs. Thomas C. Phelan, Esq.
 Phi Delta Epsilon—Rutgers*
 Phi Mu at Rutgers University*
 Ms. Amanda Phillips*
 Mr. and Mrs. Stephen Piscioti*
 Mr. Giovanni Porras*
 Ms. Denise Sullivan Porter
 Power Sales Group, Inc.
 QRFP Special Services
 Mr. Nairoby Quezada*
 R&M Manufacturing, Inc.
 Raritan Bay Federal Credit Union*
 Raritan Valley Community College
 Mr. Luis Raymond*
 Reckitt Benckiser Inc.
 Mr. and Mrs. Richard T. Richardson
 Ridge Computing
 The Robert Wood Johnson Foundation
 Ronetco Supermarkets*
 Mr. and Mrs. Steven M. Rosenberg, Esq.
 Rotary Club of Westfield
 Rumson-Fairhaven Dance Marathon*
 Mrs. Ann R. Rutherford
 Mr. and Mrs. Kenneth J. Rutherford
 Mr. Mark Sacco
 Saint Peter's Healthcare System
 Mr. Thierry Saint-Denis
 Ms. Janina Santoro*
 Sara De Coursey Ruth Trust
 Mr. and Mrs. Edward G. Sawyer
 Mr. and Mrs. John Scansaroli
 Mr. Frank Semcer*
 Mr. and Mrs. Rajendra Shah
 Mr. John Shields*
 Southwire Company
 Stantec Consulting Services, Inc.
 Stonebridge Men's Club
 Stout
 Mr. James F. Strunk
 Mr. Thomas Sullivan
 Summit Asset Management, Inc.
 Mr. and Mrs. Kent E. Swan
 Mr. Michael S. Swell*
 Mr. James M. Tanella
 The Bay State Federal Savings Charitable Foundation
 The Marisa Tufaro Foundation, Inc.
 The Mildred Goldfarb Charitable Foundation Trust

The Palisades Educational Foundation Incorporated
 The Saumoy and Young Fund
 Toms River Family Health & Support
 Mr. Richard W. Tkach
 Mr. and Mrs. William M. Tomljanovic
 The Torch Relay for CMN*
 Ms. Christine Tricarico
 Mr. David Triggiano*
 Trinity Reformed Church
 United Networks of America*
 Uplight, Inc.
 U.S. Bank National Association*
 Mr. and Mrs. William Vetter
 VNA Health Group
 Vollers Excavating & Construction, Inc.
 Mr. and Mrs. Thomas C. Wafer
 Mr. and Mrs. Leigh R. Walters
 Mr. and Mrs. Alexander C. Weil
 Efrot Weiss and Gary Hyman
 Weldon Materials
 Wells Fargo Advisors
 Westfield Area Y Men's Club
 Westfield PBA Local #90*
 WithumSmith + Brown, PC
 Worldwide Holdings & Logistics, LLC
 Mr. and Mrs. Westley Wood**
 Mr. and Mrs. Darryl Wornow
 Dr. and Mrs. Krishan Yalamanchi
 Mr. Philip Yu

Matching Companies

Autodesk Foundation
 Automatic Data Processing Federal Credit Union
 Bristol-Myers Squibb Foundation
 Broadridge Financial Solutions, Inc.
 Google Matching Gifts Program
 Hess Corporation
 Johnson & Johnson Family of Companies
 Markel Corporation
 McKinsey & Company, Inc.
 Merck Company Foundation
 Microsoft Matching Gifts Program
 New York Life
 Novartis US Foundation
 Pepsico Foundation
 Prudential Financial, Inc.
 PSEG Foundation
 PSEG Power of Giving Campaign
 The Robert Wood Johnson Foundation
 Toyota Dealer Match Program
 Vertex Pharmaceuticals
 Walt Disney Company

*Children's Miracle Network Supporter **Long-term funding commitment made in 2020



Improving lives. Changing futures.



OUR MISSION & VISION

Children's Specialized Hospital Foundation's **mission** is to inspire and secure philanthropic support for Children's Specialized Hospital, the preeminent provider of specialized healthcare for children and adolescents facing special health challenges—from chronic illnesses and complex physical disabilities like brain and spinal cord injuries to a full scope of developmental, behavioral and mental health concerns.

Our award-winning doctors, researchers and pediatric specialists work with patients and families in pursuit of the **vision** of a world where all children can reach their full potential. Children's Specialized Hospital depends on the generosity of donors to discover innovative ways to help more children break barriers and transform their lives.



100% of every donation supports the life-changing care at Children's Specialized Hospital that is transforming the lives of kids living with special healthcare needs in New Jersey and beyond.

STAY CONNECTED!



@ChildrensSpecialized



@ChildrensSpecNJ



@ChildrensSpecNJ

VISIT: www.childrens-specialized.org/giving

EMAIL: foundation@childrens-specialized.org • **CALL:** 908-301-5410

OFFICE: 150 New Providence Road • Mountainside, NJ 07092

MAKE A GIFT

scan here



www.childrens-specialized.org/giving